

Next-Generation Traffic Control: Adaptive Timer and Emergency Vehicle Priority in Intelligent Traffic Management

G.Harish

Department of E.C.E
Tirumala Engineering College
Narasaraopet, India
harishgollaprolu@gmail.com

M.Kavitha

Department of E.C.E
Tirumala Engineering College
Narasaraopet, India
kavithamathangi23@gmail.com

P.Abdul Khalik

Department of E.C.E
Tirumala Engineering College
Narasaraopet, India
khalikpathan860@gmail.com

M.venkata Manikanta

Department of E.C.E
Tirumala Engineering College
Narasaraopet, India
manikantamacharla95@gmail.com

P.H.V.S. Rajesh

Department of E.C.E
Tirumala Engineering College
Narasaraopet, India
harirajesh872@gmail.com

Abstract—Traffic has always been a troubling issue in our society. The increased number of automobiles on roads has substantially increased traffic congestion polluting the environment and causing stress and anxiety to passengers in the traffic clog. The existing system of fixed traffic control system even though widely used, lacks adaptability and operates on predefined signal timers. The lack of adaptability can lead to inefficient traffic flow, especially during high traffic congestion. To address this issue, we propose a more adaptive and intelligent system that leverages adaptive timer control and prioritizes emergency vehicles like, ambulance. The adaptive timer control system considers the count of vehicles at the previous junction as well as the count of vehicles currently arriving at the intersection to update the signal timers. Additionally, to prevent delays in emergency response times and to provide a better impact on public safety and health outcomes we have provided an added feature to prioritize emergency vehicles and release the traffic upon its arrival at the respective signal. The detection of the emergency vehicle is to be carried out using the YOLO v8(You Look Only Once) algorithm along with siren recognition using a classifier model. The proposed system offers a significant improvement over the existing traffic control infrastructures and has the potential for aiding resilient and smooth transportation.

Index Terms—AI Traffic control, Traffic management, Emergency, Adaptive traffic system, Intelligent transport systems, Smart surveillance, Computer Vision, Machine Learning, YOLO v8

I. INTRODUCTION

The existing traffic systems in urban areas face numerous challenges due to the increasing number of vehicles and the limited capacity of road networks. Fixed signal timers used in traffic control systems at intersections lead to inefficiencies and congestion. The demand for road capacity necessitates new solutions for traffic control that can adapt to changing conditions. The efficiency of transportation systems directly has a socio-economic impact. Real-time traffic information systems and intelligent control methods can affect transportation costs and time. Traffic congestion is considered one of the major barriers to sustainable urban development because it increases travelling time, energy consumption, road collisions, and environmental pollution. Its principal

manifestation is the gradual slowing of traffic, increasing travel times, fuel consumption, pollution, and other costs [1].

Intelligent traffic control systems are crucial for addressing these issues and require real-time detection and efficient response mechanisms. Applying automation and intelligent control to roadside infrastructure and vehicles can enhance traffic flow and safety in the existing transportation system. According to the survey conducted approximately 95% of respondents reported being impacted by traffic congestion in the study area. About 89% opined that it increases their anger,

98% said that it is time-consuming, and 88% perceived that it has an influence on the decline in their income. About 54% of the respondents claimed that traffic was a cause of frustration. In comparison, 95% of respondents felt that regular traffic congestion during peak and off-peak hours causes mental stress [1].

Drawbacks of existing System are:

1) *Excessive and avoidable waiting periods occur on roads when traffic densities fluctuate:* The inability of fixed countdown timers to adapt to real-time traffic conditions results in significant delays and congestion, especially during peak hours or sudden traffic surges. With India's increasing automobile population and limited road capacity, the rigid nature of fixed timers exacerbates the problem by failing to optimize traffic flow efficiently. The lack of dynamic adjustment in countdown timers hampers the smooth movement of vehicles and can contribute to increased fuel consumption and environmental pollution. This can be tackled by placing a system that sets timer based on car count.

2) *Lack of adequate measures to ensure clearance for emergency vehicles delays their prompt response.:* Delayed response times caused by traffic congestion can have severe consequences, as ambulances, fire engines, and police vehicles struggle to reach their destinations quickly. These delays not only impact the effectiveness of emergency services but also pose a risk to public safety and can result in potential loss of life and property. Implementing effective traffic management

strategies that prioritize the clearance and smooth movement of emergency vehicles is crucial for ensuring timely and efficient emergency response services. The number of accidents per day is increasing in today's scenario. As reported by Times of India in the year 2016, approximately 146,133 people lost their lives in road accidents in India. Tragically, around 30% of these fatalities are attributed to delayed ambulance services. This issue can be side-lined to a huge extent by prioritizing emergency vehicles over others at the signals.

3) *The lack of consideration for traffic conditions at previous traffic signals leads to inefficient flow.*: Ignoring traffic conditions at previous traffic signals can result in inefficient flow, leading to an irregular movement of vehicles and potential congestion on the roads. Sudden traffic congestion is often a consequence of the domino effect caused by inadequate coordination between traffic signals, where poor flow management at one signal can impact the entire traffic network. By utilizing the traffic count at previous signals to predict traffic at a given signal, we can improve traffic flow management and reduce congestion on the roads. This approach allows for better coordination between signals and helps create a more efficient and synchronized traffic flow throughout the network.

II. LITERATURE REVIEW

- Reference [2] proposes a structure that integrates Centralized control system, a mobile application for ambulance drivers and a web portal for administrators. The Centralized control system facilitates real time monitoring of the ambulance coordinates. The GPS helps navigate to the spot, update their status and availability through the mobile application. The web portal provides administrators with data to view the performance and analyse the data on a continuous basis.
- Reference [3] proposes a strategy that adjusts the timing of traffic lights based on real-time traffic conditions. Utilizes intelligent algorithms and sensors to collect data on patterns, density, and traffic volume which is analysed to determine the optimal timing for traffic lights at different intersections.
- Reference [4] proposes a framework that incorporates modules such as object detection module and signal switching module. YOLO algorithm detects and classifies vehicles into different categories and the Signal Switching Algorithm sets the green signal timer as per the traffic density and in a cyclical manner the signals are switched.
- Reference [5] puts forward a framework for integrating intelligent transportation systems and ensuring effective communication between different components of a transportation network. The Traffic-Roadway Section provides design for networking of traffic signals and the Intelligent Transportation Systems Unit (ITS Unit) is responsible for determining the type of communication system that can be used, based on the project type.
- Reference [6] suggests a strategy to prioritize emergency vehicles using Vehicle Ad-Hoc Networks (VANET) and

the Internet of Things (IoT). It measures the distance between an intersection and the emergency vehicle, considers factors such as incident type and emergency vehicle type. It includes a Traffic Management Server (TMS), vehicles, Roadside Units (RSUs), and sensors deployed within a VANET system. Roadside Units (RSUs) exchange information and regulate traffic signals. Hacking incidents to be handled by shifting traffic to uncompromised RSUs, identifying and blocking malicious sources.

- Reference [7] proposes a system that acquires live movement of vehicles. The camera shifts to the next lane based on time intervals. Vehicle detection and recognition is done using the Haar Cascade algorithm. The Video Processing module present in the system calculates the traffic density (the count) and along with time assigned for each vehicle, the signal lights are switched.

III. PROPOSED SYSTEM

Our System aims to develop and deploy a system that enables easy flow of vehicles at traffic signals using modern deep learning algorithms along with conventional cameras and sensors. Rules and regulations were followed in the proposed system as per the rules [13] by the government of India.

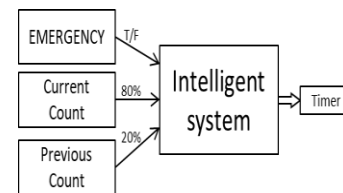


Fig. 1. Proposed system flowchart

The proposed system consists of the following:

1) *Vehicle detection and Counting Module*: The proposed system leverages the YOLO (You Only Look Once) algorithm for accurate and efficient vehicle detection. YOLO v8's fast processing time and high accuracy makes it a suitable choice for this purpose. To enhance vehicle detection capabilities, a custom YOLO v8 model was fine-tuned specifically for identifying various vehicle classes such as cars, bikes, trucks, buses and emergency vehicles. The advantages of using YOLO v8 for vehicle detection include real-time performance, enabling the system to process a continuous stream of video received from the camera and instantly identify vehicles. Additionally, YOLO's ability to detect multiple objects in a single pass improves efficiency and reduces processing time compared to traditional detection methods. This allows the proposed system to provide timely and reliable vehicle detection for effective traffic control and management. The dataset to train the model was obtained from two different sources. The labelled dataset was obtained from VehicleID (PKU VehicleID) . The dataset contained images of 26,267 vehicles . Then the model was trained using the pre- trained weights downloaded from the YOLO website. The trained

model of the output was stored according to Darknet format. The ".cfg" file holds the network architecture configuration and hyperparameters of the YOLO v8 model, defining its structure. The ".weights" file contains the learned weights and parameters of the trained YOLOv8 model, representing the knowledge gained during the training process. The confidence level was set to 80% in order for more successful detection. OpenCV module was used to capture the video from camera and passed to identify the presence of vehicles and also count the number of vehicles.

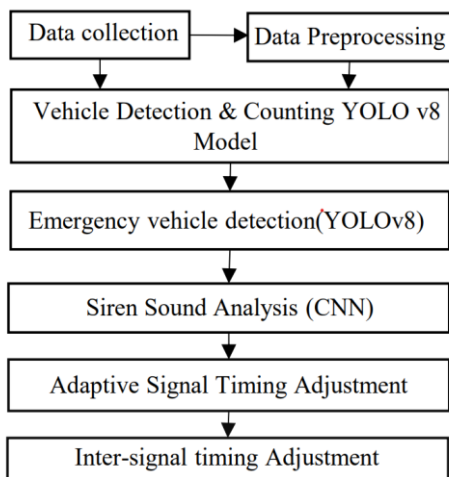


Fig. 2. Proposed system flow chart

Figure 2 shows the overall workflow of the proposed traffic management system. The process starts with collecting data from surveillance cameras. Next, data preprocessing prepares the captured video frames for analysis. The system then uses the YOLOv8 model for vehicle detection and counting, which identifies and counts different types of vehicles on the road. After that, an emergency vehicle detection module (YOLOv8) prioritizes vehicles like ambulances. At the same time, siren sound analysis with a CNN confirms the presence of emergency vehicles. Based on these inputs, the system adjusts signal timing to control traffic lights according to real-time traffic conditions. Finally, inter-signal timing adjustment coordinates signal control across multiple intersections, which improves overall traffic flow efficiency. "To identify and count different types of vehicles such as cars, motorcycles, buses, and trucks". The vehicle count obtained from this process helps in determining the traffic density at each lane of the intersection. In addition to general vehicle detection,

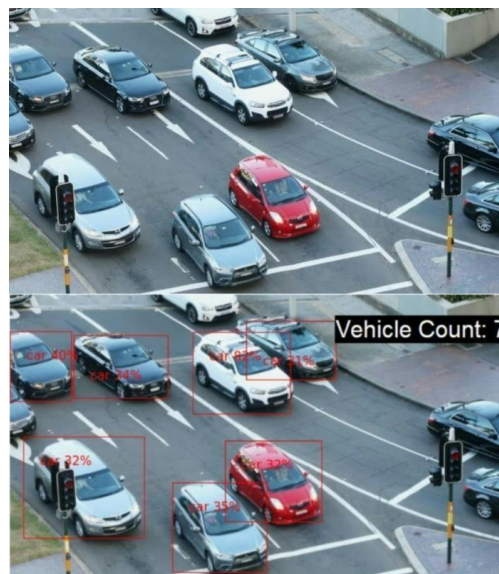


Fig. 3. Showcases test images that were subjected to our vehicle detection model. On the top, the original image is displayed, while on the bottom, the output is presented, demonstrating the application of the vehicle detection model. The output includes bounding boxes around the detected vehicles and their confidence score and label.

2) *Emergency Vehicle Identification Module:* There were 6 factors that mostly influence ambulance delays: intersection, turns, other vehicle carelessness, ambulance operator carelessness, road conditions, and traffic regulation violations. The study showed that the average traffic jam caused an ambulance delay of 10 minutes and a dense traffic condition caused an ambulance delay of 12.98 minutes longer than rare traffic conditions [9]. The proposed system features emergency vehicle detection and siren noise detection. recognition of emergency vehicles results in an emergency system giving true value and false in all other conditions.

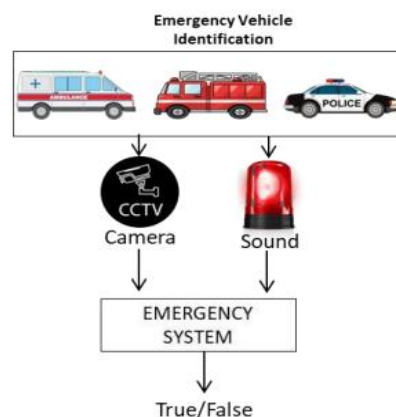


Fig. 4. Emergency vehicle Identification Module

- Vehicle Recognition: YOLO v8 model used for vehicle identification is also used here. It can detect and localize emergency vehicles with high precision, minimizing false positives and negatives. There are 3 classes of Emergency vehicles: ambulances, fire engine and police. The separately labeled dataset was obtained from images.cv and Roboflow. YOLO performs object detection by dividing the input image into a grid and predicting bounding boxes and class probabilities for each grid cell. This enables the model to detect multiple objects in a single pass, including multiple classes of emergency vehicles within the same image, without the need for additional computational overhead.



Fig. 5. The left figure shows the original image, while the image on the right side shows correctly identified emergency vehicles in boxes with class labels. Three classes of vehicle are identified: police, ambulance and fire engine.

- Siren Noise Detection: As emergency vehicles may not always be on an emergency run, it is important to identify whether there is an emergency. So, the conventional method is by the identification of a siren alarm that goes loud when activated hence it's important to have a sound recognition system. The reference [10] presents a study on detecting emergency vehicles, such as ambulances, fire engines, and police cars, based on their siren sounds. To address the issue of drivers potentially missing siren warnings, particularly when using in-vehicle audio systems, an automatic detection system called SirenNet is proposed. SirenNet is an ensemble model utilizing a CNN (Convolutional Neural Network) with two network streams. The first stream, WaveNet, processes raw waveform data, while the second stream, MLNet, works with a combined feature consisting of MFCC (Mel-frequency cepstral coefficients) and log-mel

spectrograms. Experimental results on a diverse dataset demonstrate that combining raw data with MFCC and log-mel features achieves a promising accuracy of 98.24% for siren sound detection. Notably, the system performs well even with short samples of 0.25 seconds, achieving an accuracy of 96.89%. The proposed system has potential benefits for both drivers and autopilot systems. Based on this we created a CNN for image recognition of sound wave images. The sound dataset was obtained from audioset tool inside research.google.com. Another dataset was also obtained to train for background noises which mostly contain horn sounds. The sound wave graphs of the dataset was generated using sonicvisualiser and was used as training dataset for the model labeled as "Siren" and "BackgroundNoise". The preprocessing step includes resizing the images to a consistent size (e.g., 224x224 pixels). The VGG (Visual Geometry Group) architecture of CNN was used as it consists of multiple convolutional layers with small 3x3 filters, followed by max-pooling layers for downsampling. VGG16, which has 16 layers, was used here. After monitoring performance of the model, epoch value was set to 50. Librosa library in python was used to input the live noise.

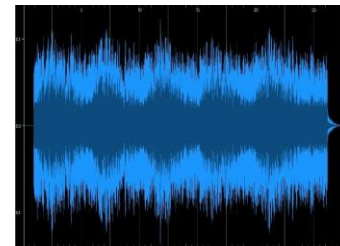


Fig. 6. A sound wave graph of a sample siren sound is shown, which was used in VGG16.

3) *Signal Communication Network Module*: To tackle the flow of irregular distribution of traffic in a city, we consider the face of past traffic signal count also while setting up the countdown timer. So, it's important to maintain a proper communication network among signals. The reference [5] puts forward the method of using optic fibres for easy communication between signals as it is found to have the maximum efficient communication. The paper also puts forward the use of 12 or 24 strand fibre to enhance the traffic communication.

4) *System Simulation Module*: The proposed traffic system was analysed and observed using a Python simulation created for both 4-road intersections and 3-road intersections. Reference [12] demonstrates the detailed study of T-intersections in Andhra Pradesh and clearly analyses how the lack of proper traffic signals contributes to huge number of accidents. The study of road traffic in the city shows that the primary cause of accident is collision of vehicles at the intersections. The collision may be rear shunt on approach to the junction, rightangled collision, principal right turn collision

or pedestrian collision. These collisions can be eliminated if the signal is properly designed. So, the main objective of the dissertation is to provide better and safe mobility of traffic through efficient signal design at the intersection. The signal is designed as per IRC guidelines so that the signal could ensure proper traffic flow. The T-intersection simulation has been built following the IRC guidelines.

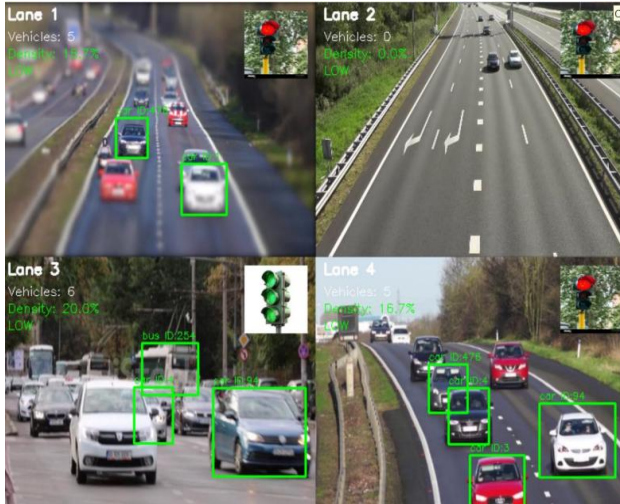


Fig. 8. Real-time traffic estimation and vehicle detection using YOLOv8

Based on the detected vehicle count, the system categorizes traffic conditions as low, medium, or high density, which helps determine the appropriate traffic signal control strategy. For example, Lane 3 shows a maximum number of detected vehicles compared with the other lanes, resulting in a higher traffic density value. In contrast, Lane 2 has minimal vehicle presence, indicating very low traffic density. Additionally, the figure displays the corresponding traffic signal status for each lane, which can dynamically change depending on the measured traffic density. This real-time detection and analysis enable the proposed system to optimize signal timing, reduce congestion, and improve overall traffic flow efficiency.



Fig. 9. Real time emergency vehicle detection

Based on the detected vehicle count, the system categorizes traffic conditions as low, medium, or high density, which helps determine the appropriate traffic signal control strategy. Fig. 8. illustrates real-time traffic analysis with the YOLOv8 object detection model. It demonstrates vehicle identification, lane-wise density estimation, and classification of traffic conditions. For example, Lane 3 shows a maximum number of detected vehicles compared with the other lanes, resulting in a higher traffic density value. In contrast, Lane 2 has minimal vehicle presence, indicating very low traffic density.

IV. PERFORMANCE EVALUATION

The performance of the proposed system is analyzed based on the simulation created. It was observed that every time an emergency vehicle enters the signal, the light immediately turns green while the rest of the signals at the intersection remained red. In all other cases the minimum red signal timer is set as 15 seconds as it's considered as the time required for pedestrian crossing and maximum red signal timer is set to 60 seconds is scheduled preventing over-lodging of vehicles. The maximum time 60 seconds is set whenever the current count of vehicle is 0 as it can be observed from the Table I given below.

Vehicle Count per Lane in the Proposed Intelligent Traffic Monitoring System

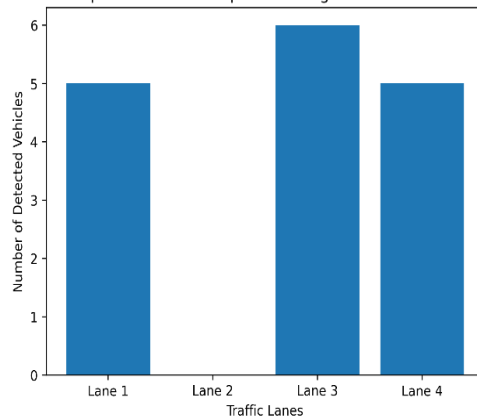


Fig. 10. Graph showing comparison of vehicles from the different lanes

V. CONCLUSION AND FUTURE WORKS

This paper presented an intelligent traffic management system that combines YOLOv8-based vehicle detection with siren-based emergency vehicle recognition to dynamically prioritize traffic signals in real time. The proposed framework accurately identifies multiple vehicle classes, including ambulances, fire engines, and police vehicles, in complex urban traffic scenes and adjusts signal timings to provide a clear path for emergency responders. Experimental evaluation on image and video datasets demonstrated high detection accuracy and low latency, indicating that the system can effectively reduce emergency vehicle delays and improve overall traffic flow compared to conventional fixed-time control strategies.

REFERENCES

- [1] Fattah, Md Abdul, Syed Riad Morshed, and Abdulla-Al Kafy. "Insights into the socio-economic impacts of traffic congestion in the port and industrial areas of Chittagong city, Bangladesh." *Transportation Engineering* 9 (2022): 100122.
- [2] George, Anita Acha, et al. "Golden aid an emergency ambulance system." 2017 International Conference on Networks Advances in Computational Technologies (NetACT). IEEE, 2017.
- [3] Shinde, Swapnil Manohar. "Adaptive traffic light control system." 2017 1st international conference on intelligent systems and information management (ICISIM). IEEE, 2017.
- [4] Gandhi, Mihir M., et al. "Smart control of traffic light using artificial intelligence." 2020 5th IEEE international conference on recent advances and innovations in engineering (ICRAIE). IEEE, 2020.
- [5] Oregon Department of Transportation Traffic Standards and Asset Management Unit "Chapter 7 – Interconnect ITS Communication Plan", June 2017.
- [6] Sumi, Lucy, and Virender Ranga. "Intelligent traffic management system for prioritizing emergency vehicles in a smart city." *International Journal of Engineering* 31.2 (2018): 278-283.
- [7] Sable, Tanvi, et al. "Density and time based traffic control system using video processing." *ITM Web of Conferences*. Vol. 32. EDP Sciences, 2020.
- [8] Maity, Madhusri, Sriparna Banerjee, and Sheli Sinha Chaudhuri. "Faster r-cnn and yolo based vehicle detection: A survey." 2021 5th international conference on computing methodologies and communication (ICCMC). IEEE, 2021.
- [9] Wiwekananda, Ketut Shri Satya, et al. "Understanding factors of ambulance delay and crash to enhance ambulance efficiency: an integrative literature review." *J Comm Emp Health* 3 (2020): 213.
- [10] Tran, Van-Thuan, and Wei-Ho Tsai. "Acoustic-based emergency vehicle detection using convolutional neural networks." *IEEE Access* 8 (2020): 75702-75713.
- [11] Drusch, Robert L. "Estimating annual average daily traffic from shortterm traffic counts." *Highway Research Record* 118 (1966): 85-95.
- [12] Surisetty, Ramesh, and Soma N. Sekhar. "Designing of a Traffic Signaling System at T-Intersection." *International Journal of Engineering Research and Application* 7.4 (2017): 82-86.
- [13] Dr. A. MAHESH BABU, J. Jatin Karthik, M. Surya Kiran and Syed Shabbir "Design and Analysis of Traffic Signal at Signalized Junction", *Journal of Engineering Sciences*, Vol 13 Issue 7, July/2022, ISSN:03779254
- [14] Ministry of road transport highways, Government of India "Traffic Signs ensure safety: Book on road safety signage and signs", Fifth Edition :2015
- [15] US Department of transportation Federal Highway Administration "Traffic Signal Timing Manual", CHAPTER 5, Signal Timing Manual Second Edition