



ROBOTIC VEHICLE CONTROLLED BY HAND GESTURE USING ACCELEROMETER

Revati V. Kedar¹, Sharad L. Pawar², Prapti G. Godase³

^{1,2,3}*Electronics & Telecommunication Engg. FTC, COER, SANGOLA, Solapur university, M.S. India*

ABSTRACT

This paper presents a model for gesture controlled user interface and identifies trends in technology, application and usability. We present an integrated approach is real time detections, gesture based data which control vehicle movement and manipulation on gesture of the user using hand movements. Accelerometer based hand gesture control system depends on the hand movement of the user. For different types of hand movement the Robot works in different directions. A robot which can be controlled wirelessly with the help of hand gesture is much easier than other controlling methods. The gesture control system gives a new dimension in the world of controller. The focus of the project was to sense the hand gesture wirelessly. Different types of gesture can give the different value to the sensor, so by observing various data of sensor for hand gesture we tried to implement it on a gesture sensing wireless robot. A robot which gives an idea of the hand movement controlling with the help of accelerometer. The argument proposed in the project is that wireless Hand gesture movement can response faster and also can give accurate direction in the receiver side.

Keyword: *Accelerometer, Arduino-Uno, RF Module, Motor Driver, Motor.*

I. INTRODUCTION

After the revolution of robots in various sectors, people are trying to control them more accurately and easily. Over the past few years people are finding simpler way to communicate with robots in order to enhance their contribution in our daily life. Humans and robots are combining more than ever before to overcome the new challenges. From the very early stages it was one of the main objectives to control the robot smoothly and comfortably. So rather using traditional remote or keyboard it's better to control a robot with the help of our hand gesture. Because hand gesture is very natural way of communication in our human history. Hand gesture technology being used more spontaneously in many sectors nowadays. It's becoming very popular also in the robotic industry as well. There are many hand gesture technologies available nowadays but one of the most popular form is accelerometer based hand gesture technology. The accelerometer can measure the static acceleration of gravity in tilt sensing application, as well as dynamic acceleration due to motion, shock or vibration [1]. Accelerometer is used to capture human hand gestures. By sensing the gesture its works accordingly.

Our main objective is to reduce the delay and make the response time faster. On the other hand we made this such an inexpensive that it's cheaper than the traditional gesture control robotic car.



II. LITERATURE SURVEY

In, [1] they used the method based on accelerometer using hand gesture in four direction i.e forward, backward, right and left. RF module used for wireless data transmission and link between transmitter and receiver module which itself acts as antenna. According to hand gesture robotic vehicle moved in four directions. they used accelerometer as a sensor for controlling the motions. It also measure the static as well as dynamic acceleration of gravity in tilt sensing application.

In, [2] they used a PC with a computing software such as matlab. Matlab is appropriate for such use with the availability of image processing toolbox, which has all the tools for acquiring an image and its parameters. They also used methods for processing images i.e image acquisition, image extraction, image conversion (convert image into binary image), image segmentation etc. for wireless data transmission they had used zigbee technology which is much expensive and also for image capturing they had used web camera. but the webcam having drawback i.e captured image is not same in different modes. They observed about a system to recognize the fingers from image sequences by the motion trajectory of a single hand which is suitable for real time application. The system achieved 80% average recognition rate which was very good as compared to the obstacles faced like inadequate light conditions and approximate threshold values. But this system having some problems recognizing the fingers, although this is the limitations of the technology, inevitable problems.

In [3], they observed in this paper, communication between human and machine makes more sophisticated with the help of gesture using Bluetooth technology for wireless data transmission. They concluded that features like user friendly interface, light weight and portability of android OS based Smartphone has overtaken the sophistication of technologies like programmable glove, static cameras etc., making them obsolete.

In [4], they proposed the system for hand gesture recognition, such as marker-based gesture recognition, vision-based motion recognition, haptic-based motion recognition and EMG-based hand motion recognition. Their system is having average 80% recognizing rate. They proposed a set of recognition algorithms: TC and FEC. They evaluated the algorithms on a data glove with 13 different types of grasps and ten in-hand manipulations. Vibration motors are used for an vibrotactile feedback. They observed that the hand held controller can provide the 'connect and play' service for the user to control the home robot.

III. METHODOLOGY

The whole project was mainly divided into two main parts. The transmitter part was attached in the hand, where it can sense the human hand gesture. The popular and easier way for making robot is using microcontroller to control them. So we decided to go with microcontroller as Arduino to move ahead with our project so we studied about various types of microcontroller before starting our project and chose best one for our project. Another important component in this project is Accelerometer, Which will sense our gestures. We tried to gather as much knowledge as possible about accelerometers. For our project first we wanted to use "MPU 605" as an accelerometer but then we move on to ADXL335 because of availability of the product in our market and also because of the price. "MPU 6050" would have cost us doubled than ADXL335. And another important part of our project was to send the data wirelessly. We studied lot about wireless technology in order to send our transmitting data correctly and accurately in the receiving end of our robot. After our research we have agreed to

use RF module for wireless data transmission. Because it covers decent amount of area and its data rate is quite good. Primarily we wanted to use X-bee as our transmitter and receiver because it has much higher data rate and covers huge area but it would have make the project much more expensive.

Wireless transmitter and receiver is used separately to ignore any kind of complexity. Serial data communication is used here for a single bit data transmission. Gear motors were used as the wheel of the robot, normally DC motor been used in robots but gear motors gives high torque which means better speed. L293d was used as motor driver of the circuit because it's flexible and simple to use also its not expensive. We also make inquiries about other necessary components which was used in our project and chosen them wisely.

IV. WORKING PRINCIPLE

This is a project based on hand gesture technology in order to control a robotic car wirelessly. At first the hand movement is sensed by the accelerometer than the analog data is passed to microcontroller in the transmitting side. After processing the data from accelerometer microcontroller passed the data to wireless module and the signal than goes to the receiver part. And from receiver end microcontroller sense it via wireless module in the receiving antenna and pass it to the motors via motor driver. Then the wheels the started to in the direction where the hand gesture commanded it to move. The accelerometer basically moves in three axis. For movement in X, Y and Z axis the robot gets accurate direction. But the main part of the robot basically is to sense the gesture from our hand to try to make it a medium to control the robot.

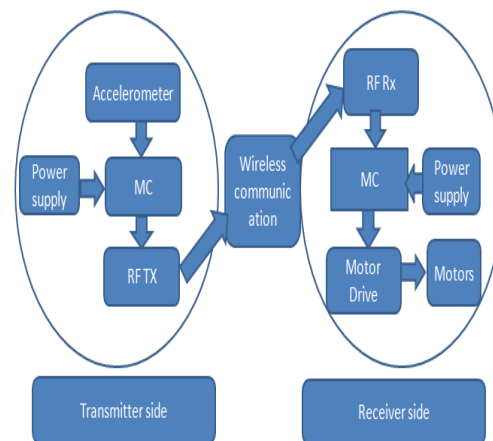


Fig.1 Block diagram of Transmitteing and Receiver Section

1.Accelerometer: :It's a low power, thin 3-axis accelerometer with signal conditioned voltage outputs device which sense the tilt and gesture movement of human. The user selects the bandwidth of the accelerometer using the Cx, Cy and Cz capacitors at the Xout, Yout and Zout pins. Bandwidth can be selected to suit the application, with a range of 0.5Hz to 1500Hz for the X and Y axes, and a range of 0.5 Hz to 550Hz for the Z axis. The Operating voltage of ADXL335 is 3V & it operates within 1.8-3.6V and sensitivity at Xout, Yout, Zout is 3V. It has no external filter to consume signals noise. Operating Temperature range is -40 to 85 °.

2.Arduino(Microcontroller): Arduino is an open-source physical computing platform. The Arduino Uno is a microcontroller board based on the ATmega328 (datasheet). It has 14 digital input/output pins (of which 6 can

be used as PWM outputs), 6 analog inputs, a 16 MHz crystal oscillator, a USB connection, a power jack, an ICSP header, and a reset button. It contains everything needed to support the microcontroller; simply connect it to a computer with a USB cable or power it with a AC-to-DC adapter or battery to get started.

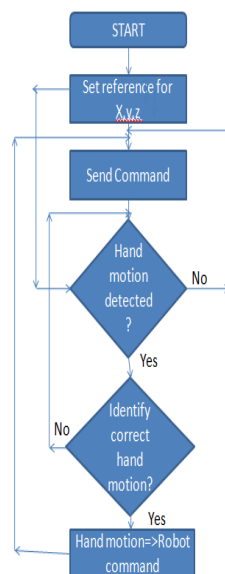
3. RF Module: RF module is a small electronics device which is used to receive, transmit or transceiver radio wave on one of a number frequencies. It covers a certain amount of area depend on bandwidth frequency. When RF module gets any motion signal then converts it to motion signal to electrical signal then transmitter transmit it through receiver end, a decoder is connected through receiver end to decode the signal. It's one way communication type and working frequency is around 433.875MHz to 434.650MHz. Frequency response of the device is 150Hz to 2.4 KHz and baud rate is 300 to 4800bps.

4. Motor Driver (L293d): The L293D is quadruple high-current half-H drivers. It can provide bidirectional drive current of up to 600-mA at voltages from 4.5V to 36V. It is also designed to drive inductive loads such as inductive relays, solenoids, dc and bipolar stepping motors, as well as other high current/high voltage loads in positive-supply applications. All inputs are TTL compatible, each output is a complete totem-pole Drive circuit, with a darlington transistor and a Pseudo darlington source.

5. Gear Motor: In a Gear motor, the magnetic current (which can be produced by either permanent magnetic or electromagnets) turns gears that are either in a gear reduction unit or in an integrated box. A second shaft is connected to those gears. The result is that the gears greatly increase the amount of torque the motor is capable of producing while simultaneously slowing down the motors output speed. The motor will not need to draw as much current to function and will move more slowly, but will provide greater torque.

6. Power Supply: It is a hardware which supplies the required voltage to the device. A power supply is a component that supplies power to at least one electric load. Typically, it converts one type of electrical power to another, but it may also convert a different form of energy - such as solar, mechanical, or chemical - into electrical energy. A power supply is also known as a power brick or power a

V. FLOW CHART





VII. APPLICATION

Wireless hand gesture technology can play an important role in upcoming years. People, device and computing are going to combine more than ever before to enhance the performance of our daily used devices. Wheel chair based on hand gesture technology also is encouraging project to helpS the paralyzed people [3]. Also many home appliances including TV, Computer etc. can be controlled with the help of hand gestures. Gesture glove is improving rapidly and in future we can hope to have more accurate, flexible and less expensive gesture glove where it will be able to control more devices related to our daily life.

- Hospital
 - Wheel chair Control
 - Hospital Bed Control
- Industrial Robots
 - Robotic Arm Control
 - Self-Controlled Humanoids
- Automobile
 - Gesture controlled cars

VIII. FUTURE WORK

The A lot of project been made on robotic car. And controlling issue is always the main factor. In our project to tried to make easier and simpler controlling system. We focused to make a system which is cheap and reliable. There are lots of opportunities to make many important projects based on our project. We can add a video which will transmit the footage wirelessly in our monitor. A robotic arm can be added in the system and which also can be operated with the help of hand gesture. Hand gesture control wheel chair can be made by following the same mechanism as our project with a bigger and high torque motor. This wireless gesture control system can also be helpful for controlling our home appliances.

IX. CONCLUSION

It's always a challenge for engineers to make the things simpler and cheaper the way they were before. We tried to emphasize on those concepts and that's why we built a wireless hand gesture control robot. People used PC or remote to control the robot car but controlling it via hand gesture makes it easier than ever before to control a robot. Also our main target was to make it less expensive so we were more conscious about choosing the components. Although we tried to make it less expensive but we did not compromise on the quality. We tried to make it more reliable and simple. The biggest advantage of our project is that it's very easy to control. The main problem of this system is that in order to collect the raw data from the hand gesture or from hand movement the transmitting glove must be worn by the user. Also when one trying to control a robot with the hand gesture even the mistaken hand gesture could result a wrong movement of the robot. It's also quite expensive compare to remote control system. Putting those gloves to control robot is time consuming also limit one range of motion. Also human hand size and shape vary from human to human that's why angle movement for specific direction can also vary.



X. ACKNOWLEDGEMENT

I am grateful to the cooperation and constant encouragement from my honourable Head of Department **Prof. Dhanshri Raut**. Her regular suggestions made my work easy and proficient.

I would like to express profound gratitude to my guide **Prof. Sharad L. Pawar** for his invaluable support, encouragement, supervision and useful suggestions throughout this project work. Her moral support and continuous guidance enabled me to complete my work successfully.

I wish to express my appreciation to **Prof. Harshal B. Waghmare & Prof. Prakash S. Anadhare** who helped me to overcome my doubt's in doing this seminar.

We are heavily indebted to Principal **Dr. M. S. Pawar** for his Constant inspiration assistance throughout the project.

I wish to thank my parents for their undivided support and interest who inspired me and encouraged me to go my own way, without whom I would be unable to complete my project. At last but not the least I want to thank my friends who appreciated me for my work and motivated me and finally to God who made all the things possible.

REFERENCES

- [1] Mir Gulam Mohin Uddin¹, Md.Abu Bakkar Chiddik², Tanbir Bakth Nabil³, Emad Uddin Ahmed⁴ Design and Implementation of Robotic Vehicle Can Be Controlled Using Hand Gesture International Journal of Scientific Engineering and Research (IJSER) www.ijser.in ISSN (Online): 2347-3878 Volume 3 Issue 3, March 2015
- [2]. Gaurav Chauhan, Prasad Chaudhari, "Gestures based Wireless Robotic Control using Image Processing" 2015 5th Nirma University International Conference on Engineering (NUiCONE),IEEE. 978-1-4799-9991-0/15/\$31.00 ©2015 IEEE
- [3]. Dr.Shaik Meeravali, 2M . Aparna Design and Development of a Hand-glove Controlled Wheel Chair Based on MEMS International Journal of Engineering Trends and Technology (IJETT) – Volume 4 Issue 8- August 2013
- [4]. Premangshu Chanda, Pallab Kanti Mukherjee, Subrata Modak, Asoke Nath Gesture Controlled Robot using Arduino and Android Volume 6, Issue 6, June 2016 ISSN: 2277 128X International Journal of Advanced Research in Computer Science and Software Engineering Research Paper Available online at: www.ijarcsse.com
- [5]. Umesh Yadav¹, Ankur Tripathi², Sonali Dubey³,S.K.Dubey⁴ GESTURE CONTROL ROBOT International Journal of Advanced Technology in Engineering and Science www.ijates.com Volume No.02, Issue No. 05, May 2014 ISSN (online): 2348 – 7550
- [6] Altaf Ganihar, Shreyas Joshi, Rahul G, Rohini Hongal and Uma Mudenagudi, "Android Based Wireless Gesture Controlled Robot" 2014 International Conference on Advances in Electronics, Computers and Communications (ICAIECC), IEEE.
- [6] Juan Wu, Guifang Qiao, Jun Zhang, Ying Zhang and Guangming Song, "A hand-Motion-based Remote control interface with Vibrotactile Feedback for Home Robot", *IEEE/RSJ Intl Conf on Intelligent Robots and Systems*, Taipei, Taiwan, pp.4644-4648, 2010.



- [7] .Mr.Pravin Vaishnav, Mrs.Shalini Tiwari “Accelerometer Based Hand Gesture Controlled Robot” International Journal of Science and Research (IJSR) ISSN (Online): 2319-7064 Index Copernicus Value (2013): 6.14 | Impact Factor (2013): 4.438
- [8] AdityaPurkayastha, Akhil Devi Prasad, Arunav Bora, Akshaykumar Gupta, Pankaj Singh, “Hand Gestures Controlled Robotic Arm”, Journal of International Academic Research For Multidisciplinary, Vol-2, Issue-4, PP.-234-240, May 2014.
- [9]. “What is microcontroller? - Definition from WhatIs.com”, [Online] Available: <http://whatis.techtarget.com/definition/microcontroller> [Accessed: Nov 4, 2014].